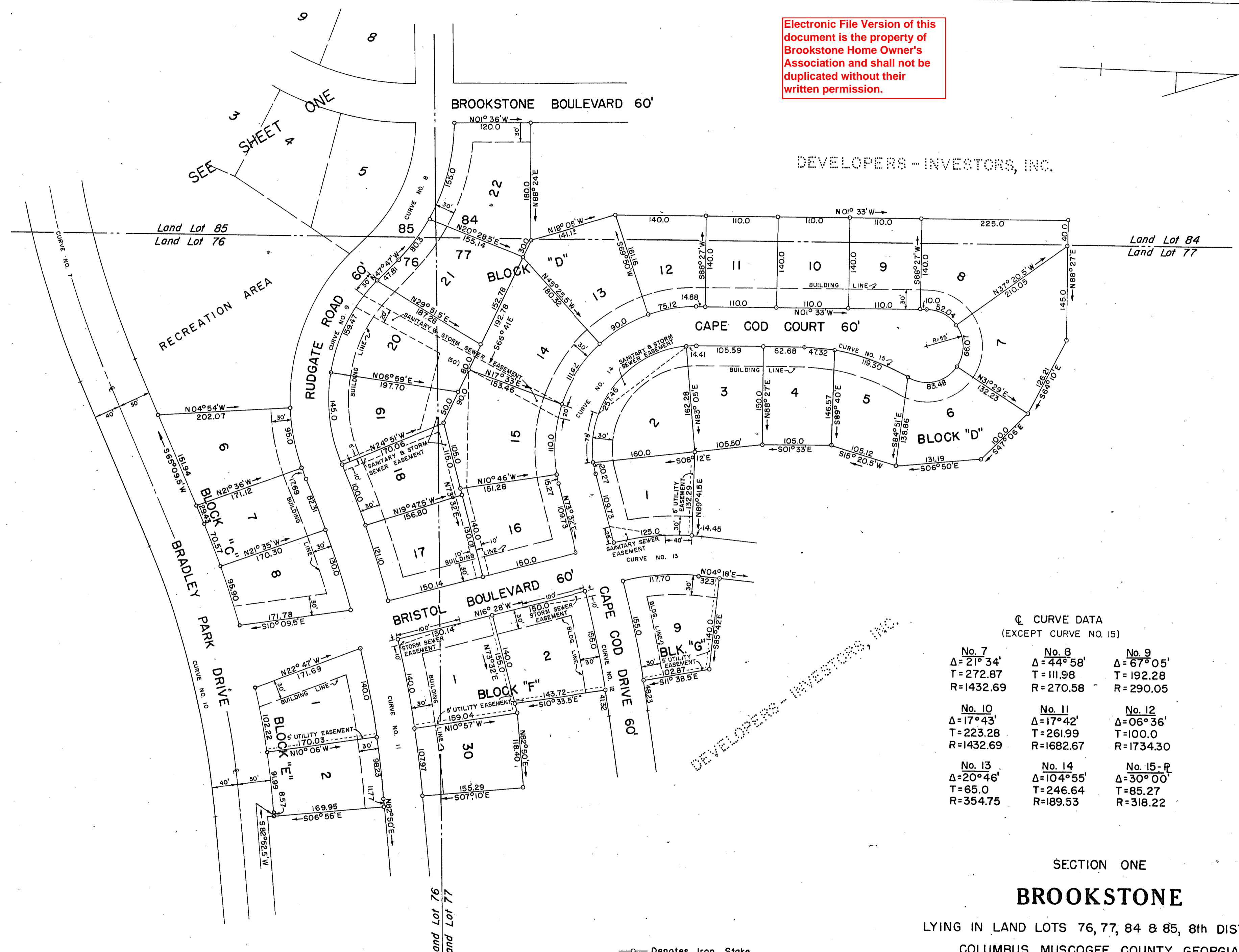


Electronic File Version of this document is the property of Brookstone Home Owner's Association and shall not be duplicated without their written permission.



Q CURVE DATA  
(EXCEPT CURVE NO. 15)

<b>No. 7</b> Δ = 21° 34' T = 272.87 R = 1432.69	<b>No. 8</b> Δ = 44° 58' T = 111.98 R = 270.58	<b>No. 9</b> Δ = 67° 05' T = 192.28 R = 290.05
<b>No. 10</b> Δ = 17° 43' T = 223.28 R = 1432.69	<b>No. 11</b> Δ = 17° 42' T = 261.99 R = 1682.67	<b>No. 12</b> Δ = 06° 36' T = 100.0 R = 1734.30
<b>No. 13</b> Δ = 20° 46' T = 65.0 R = 354.75	<b>No. 14</b> Δ = 104° 55' T = 246.64 R = 189.53	<b>No. 15-R</b> Δ = 30° 00' T = 85.27 R = 318.22

—○— Denotes Iron Stake

SECTION ONE  
**BROOKSTONE**  
LYING IN LAND LOTS 76, 77, 84 & 85, 8th DISTRICT  
COLUMBUS, MUSCOGEE COUNTY, GEORGIA

SCALE: 1" = 100' 15 MAY 1970

MOON, MEEKS & ASSOCIATES  
Civil Engineers ————— Columbus, Georgia