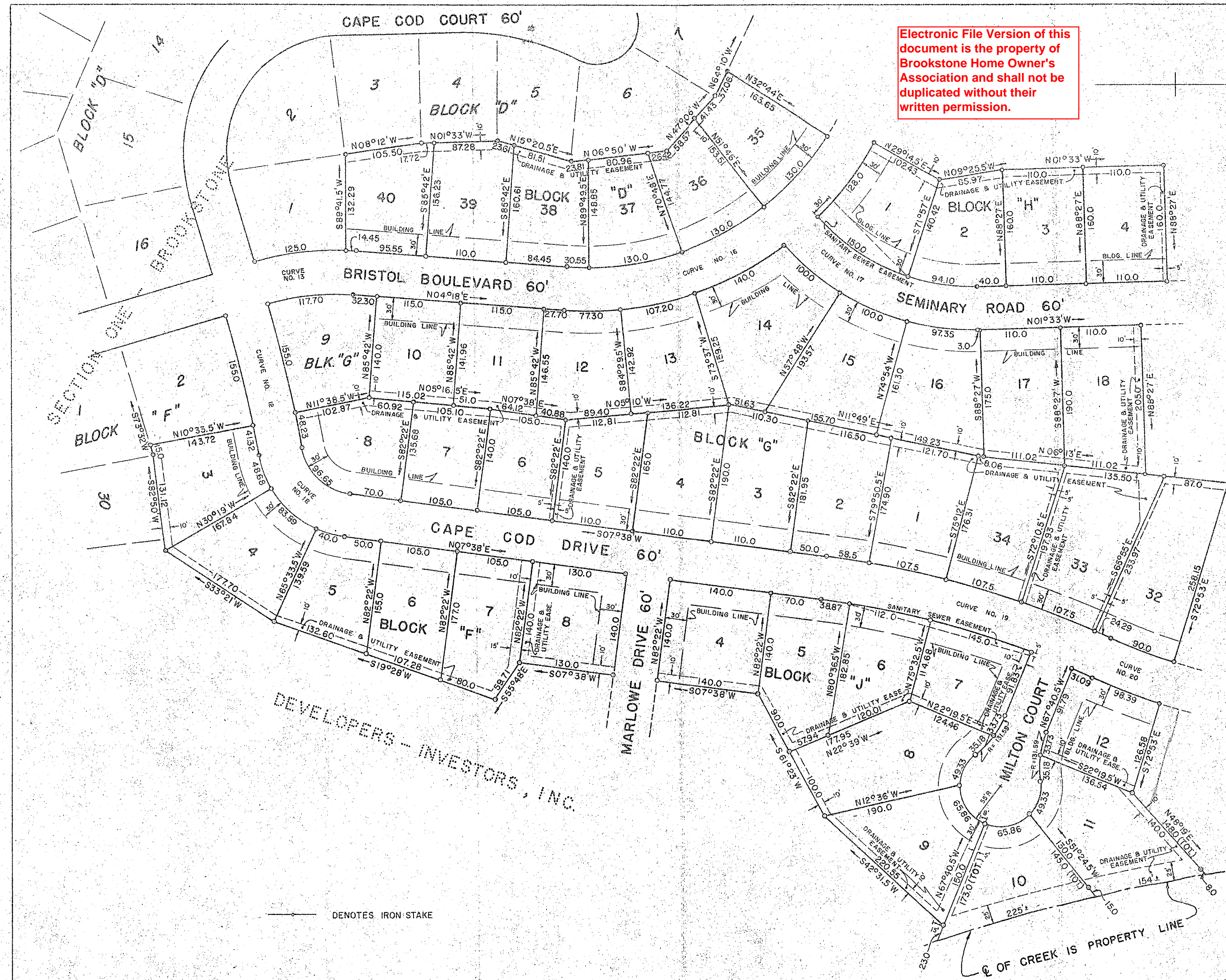


Electronic File Version of this document is the property of Brookstone Home Owner's Association and shall not be duplicated without their written permission.



**② CURVE DATA**

<b>CURVE NO. 12</b> Δ=06°36' T=100.0' R=1734.30'	<b>CURVE NO. 13</b> Δ=20°46' T=65.0' R=354.75'
<b>CURVE NO. 16</b> R=421.39'	<b>CURVE NO. 17</b> Δ=50°51' T=145.0' R=305.03'
<b>CURVE NO. 18</b> Δ=72°30' T=78.0' R=106.38'	<b>CURVE NO. 19</b> Δ=17°30' T=199.62' R=1296.94'
<b>CURVE NO. 20</b> Δ=08°01' T=47.19' R=673.47'	

DEVELOPERS - INVESTORS, INC.

DEVELOPERS - INVESTORS, INC.

— DENOTES IRON STAKE

**CERTIFICATES**

PURSUANT TO THE SUBDIVISION REGULATIONS OF COLUMBUS, GEORGIA, ALL THE REQUIREMENTS OF APPROVAL HAVING BEEN FULFILLED, THIS FINAL PLAT WAS GIVEN FINAL APPROVAL BY THE PLANNING DIVISION OF COLUMBUS, GEORGIA

ON 4-21-73  
*George A. ...*  
DIRECTOR OF PLANNING

IN MY OPINION, THIS IS A CORRECT REPRESENTATION OF THE LAND PLATTED AND HAS BEEN PREPARED IN CONFORMITY WITH MINIMUM STANDARDS AND REQUIREMENTS OF LAW.

DATE 4-23-73  
*A. B. Moon, Jr.*  
A. B. MOON, JR., R.L.S.  
GEORGIA REG. 782

STREETS, STORM DRAINAGE DESIGN, CONSTRUCTION PLANS, AND EASEMENTS MEET THE REQUIREMENTS OF THE COUNCIL OF COLUMBUS, GEORGIA AND ARE APPROVED BY THE DEPARTMENT OF ENGINEERING OF COLUMBUS, GEORGIA.

DATE 4-25-73  
*L.P. ...*  
DEPARTMENT OF ENGINEERING

THE OWNER OF THE LAND SHOWN ON THIS PLAT AND WHOSE NAME IS SUBSCRIBED HERETO, THROUGH ITS DULY AUTHORIZED OFFICERS, CERTIFIES THAT THIS PLAT WAS MADE FROM AN ACTUAL SURVEY, THAT ALL STATE, CITY, AND COUNTY TAXES OR OTHER ASSESSMENTS NOW DUE ON THIS LAND HAVE BEEN PAID.

DEVELOPERS - INVESTORS, INC. 4-23-73  
*L.P. ...*  
PRESIDENT  
*L.R. ...*  
SECRETARY

**SECTION TWO**

**BROOKSTONE**

LYING IN LAND LOT 77, 8th DISTRICT COLUMBUS, MUSCOGEE COUNTY, GEORGIA

SCALE: 1" = 100' 23 APRIL 1973

MOON, MEKS & PATRICK, INC.  
CIVIL ENGINEERS COLUMBUS, GEORGIA